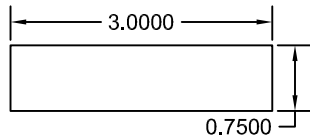
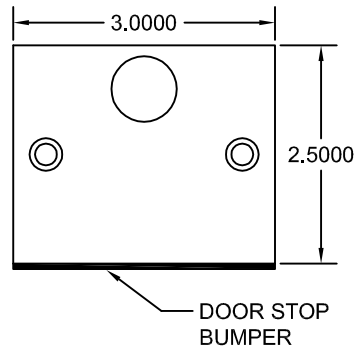


# OFFSET STRIKE

SURFACE MOUNT TO BOTTOM OF HEADER

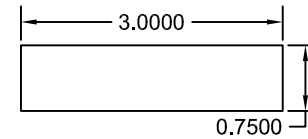


HEIGHT OF STRIKE IS  $\frac{3}{4}$ "  
REQUIRES MIN.  $\frac{7}{8}$ "  
CLEARANCE UNDER  
HEADER TO TOP OF  
LOCKING PULL

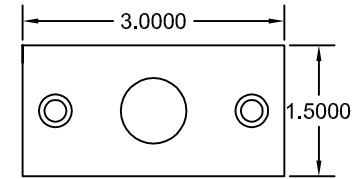


# CENTER STRIKE

SURFACE MOUNT TO BOTTOM OF HEADER

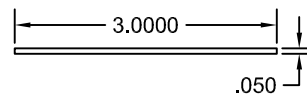


HEIGHT OF STRIKE IS  $\frac{3}{4}$ "  
REQUIRES MIN.  $\frac{7}{8}$ "  
CLEARANCE UNDER  
HEADER TO TOP OF  
LOCKING PULL

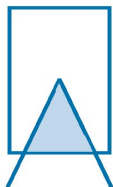
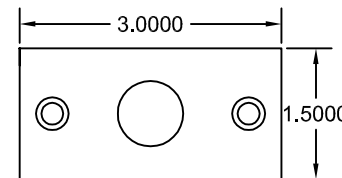


# CENTER STRIKE FLUSH

SURFACE MOUNT TO BOTTOM OF HEADER



HEIGHT OF STRIKE IS .050"  
REQUIRES MIN.  $\frac{1}{8}$ "  
CLEARANCE UNDER  
HEADER TO TOP OF  
LOCKING PULL



**Access Door, Inc**

PO Box 517  
528 Johnson St  
Keokuk, IA 52632

(319)526-7705